

## Inductive proximity sensors IH 06 series, sensing range 2/4 mm DC 3-wire, metal housing

Dimensions in mm

### IH 06

Advanced short series

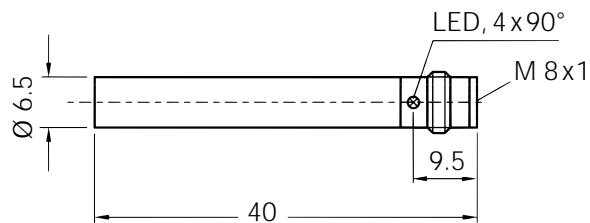
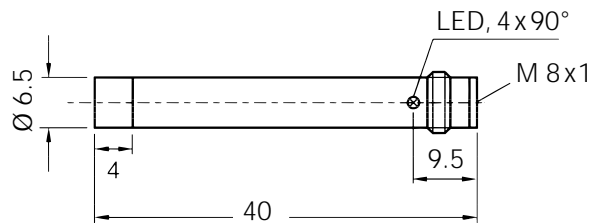
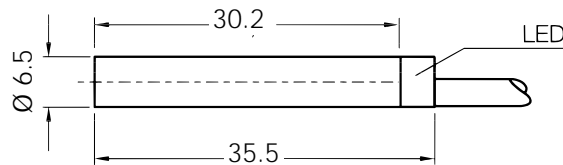
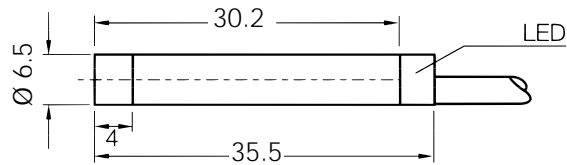
#### Features



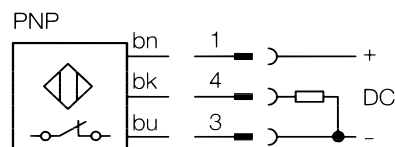
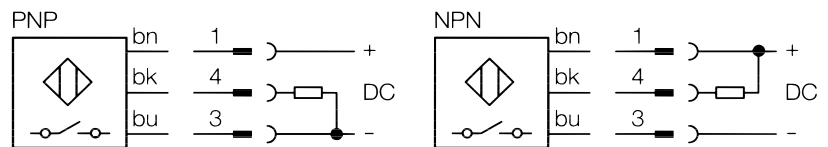
- ▶ Enhanced sensing range
- ▶ Can be installed flush or non-flush in metal
- ▶ PNP or NPN output
- ▶ Normally closed/ normally open function
- ▶ High switching frequency
- ▶ Short-circuit protection (pulsed)
- ▶ Solid stainless steel housing
- ▶ Cable or connector
- ▶ Enclosure rating IP 67
- ▶ LED status indicator

#### Accessories

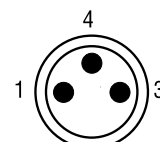
- ▶ Round connectors
- ▶ Mounting clamp



#### Connection diagram



Wire colour	Contact	Assignment
bn brown	1	+ V DC
bk black	4	NO/NC
bu blue	3	- V DC



## Electrical and mechanical data

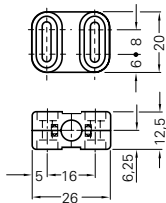
<b>Operating voltage</b> $U_b$	10 ... 30 V DC	<b>Short-circuit protection (pulsed)</b>	yes
<b>Ripple</b> $U_{pp}$	$\leq 10\%$ of $U_b$	<b>Reverse polarity protection</b>	yes
<b>Voltage drop</b> $U_d$ (at $I_a$ max.)	$\leq 1.2$ V	<b>Power-up pulse suppression</b>	yes
<b>Power consumption</b> (without load)	$\leq 10$ mA	<b>Enclosure rating to EN 60529</b>	IP 67
<b>Continuous current</b> $I_a$	$\leq 200$ mA	<b>Shock and vibration stress</b>	30 g, 11 ms 10 to 55 Hz, 1 mm
<b>Time delay before availability</b> $t_v$	$\leq 5$ ms	<b>Ambient temperature</b> $T_a$	- 25 ... + 70 °C
<b>Hysteresis</b> H	1% - 20% of $s_r$	<b>Housing material</b>	Stainless steel, plastic
<b>Repeatability</b> R ( $U_b$ and $T_a$ constant)	$\leq 5\%$ of $s_r$	<b>Connection cable</b>	PVC, 3 x 0.14 mm <sup>2</sup>
<b>Temperature drift</b>	$\pm 10\%$ of $s_r$		
<b>EMC</b>	to EN 60 947-5-2		

## Selection table

Sensing range $s_n$ mm	Installation in metal	Switching output	Output function	Switching frequency $f$ in Hz	Connection	Type	Order number
2		PNP		3000	Cable 2 m	IH 06-02BPS-VWK	6 025 874
2		NPN		3000	Cable 2 m	IH 06-02BNS-VWK	6 025 875
2		PNP		3000	Connector M 8 x 1 mm	IH 06-02BPS-VTK	6 025 877
2		NPN		3000	Connector M 8 x 1 mm	IH 06-02BNS-VTK	6 025 878
2		PNP		3000	Connector M 8 x 1 mm	IH 06-02BPO-VTK	6 025 879
4		PNP		2500	Cable 2 m	IH 06-04NPS-VWK	6 025 880
4		NPN		2500	Cable 2 m	IH 06-04NNS-VWK	6 025 881
4		PNP		2500	Connector M 8 x 1 mm	IH 06-04NPS-VTK	6 025 882
4		NPN		2500	Connector M 8 x 1 mm	IH 06-04NNS-VTK	6 025 883
4		PNP		2500	Connector M 8 x 1 mm	IH 06-04NPO-VTK	6 025 884

\*See installation notes

## Accessories



Mounting clamp for IH 06 type  
Plastic with two screws

**Type**  
**Order-Nr.**

BEF-S-H06  
7901771

# SICK

**Great Britain**  
Erwin Sick Ltd.  
Waldkirch House  
39 Hedley Road, St. Albans  
Hertfordshire AL 1 5BN  
Phone +44 17 27-83 11 21  
Fax +44 17 27-85 67 67  
info@sick.co.uk

**USA**  
SICK, Inc.  
6900 West 110th Street  
Bloomington, MN 55438  
Phone +1 (952) 9 41-67 80  
Fax +1 (952) 9 41-92 87  
WATS: 1-800-325-7425  
info@sickusa.com

**Australia**  
Erwin Sick Optic-Electronic  
Pty. Ltd. Head Office, P.O. Box 214  
899 Heidelberg Road  
Ivanhoe, Vic. 3079, Australia  
Phone +61 39 49 74 10 0  
(0 08) 33 48 02 - toll free  
Fax +61 39 49 71 18 7  
sales@sick.com.au