

# Planning, Configuration and Visualizing for SIRIUS



	<b>Introduction</b>
12/2	- Overview
	<b>Soft Starter ES</b>
12/4	- Overview
12/5	- Selection and ordering data
	<b>Motor Starter ES</b>
12/7	- Overview
12/8	- Selection and ordering data
	<b>SIMOCODE ES</b>
12/10	- Overview
12/12	- Selection and ordering data
	<b>SIMOCODE pro function block library for SIMATIC PCS 7</b>
12/14	- Overview
12/14	- Selection and ordering data
	<b>Modular Safety System ES</b>
12/15	- Overview
12/17	- Selection and ordering data
	<b>ECOFASST ES</b>
12/18	- Overview
12/18	- Selection and ordering data
	<b>Technical Information</b>
	can be found at <a href="http://www.siemens.com/industrial-controls/support">www.siemens.com/industrial-controls/support</a>
	under Product List: - Technical Specifications
	under Entry List: - Updates - Downloads - FAQ - Manuals - Characteristic curves - Certificates
	and at <a href="http://www.siemens.com/industrial-controls/configurators">www.siemens.com/industrial-controls/configurators</a> - Configurators

## Introduction

### Overview



SIRIUS ES engineering software (E-SW)

The programs of the SIRIUS ES software family enable:

- Clearly arranged configuring of device functions and their parameters – online and offline
- Efficient diagnostics functions and display of the most important measured values
- Time savings through shorter startup times.

The SIRIUS ES programs such as Motor Starter ES, Soft Starter ES and SIMOCODE ES are available in three versions which differ in user-friendliness, scope of functions and price (for details see the descriptions of the individual products).

SIRIUS ES	Basic	Standard	Premium
Local interface on the device (system interface)	✓	✓	✓
Basic functions for parameterizing the devices			
• Parameter assignment	✓	✓	✓
• Operating	✓	✓	✓
• Diagnostics	✓	✓	✓
• Test	✓	✓	✓
Standard functionality			
• Parameterizing with the integrated graphics editor <sup>1)</sup>	--	✓	✓
• Creating typicals	--	✓	✓
• Exporting parameters	--	✓	✓
Complete functionality			
• Group functions	--	--	✓
• S7 Routing	--	--	✓
• Teleservice through MPI	--	--	✓
• STEP7 Object Manager	--	--	✓
PROFIBUS interface	--	--	✓

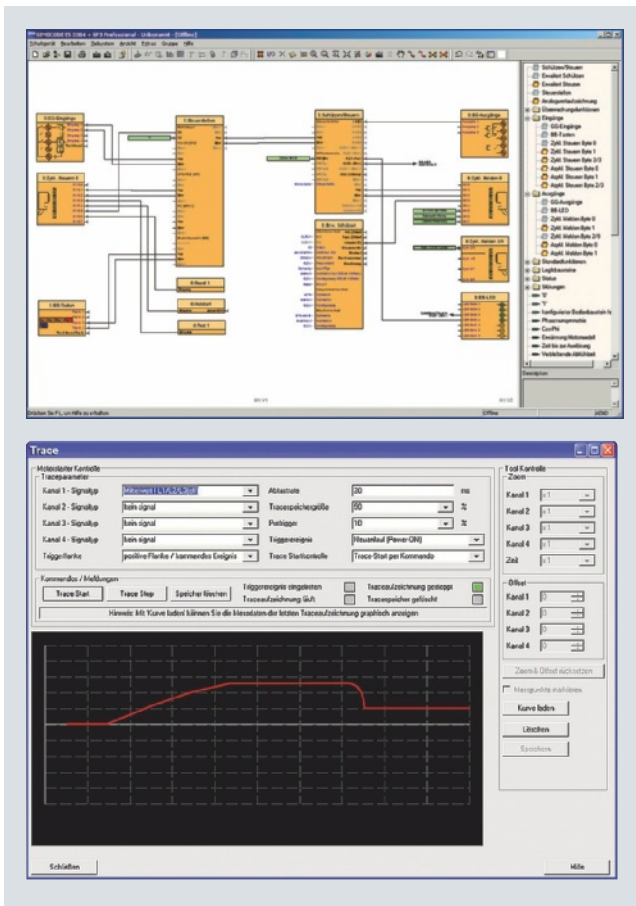
✓ Function available

-- Function not available

<sup>1)</sup> Depending on SIRIUS ES program.

In addition to device-specific parameterization, the programs of the SIRIUS ES software family also provide the following functionality in a uniform look and feel. These functions are available in many SIRIUS ES programs.

- **Standards-conform printouts**  
The programs of the SIRIUS ES software family greatly simplify machine documentation. Parameterization printouts according to EN ISO 7200 are possible. The elements to be printed are easy to select and compile as required.
- **Easy creation of typicals**  
Typicals can be created for devices and applications with only minimum differences in their parameters. These typicals contain all the parameters which are needed for the parameterization. In addition it is possible to specify which of these parameters are fixed and which can be adapted, e. g. by the startup engineer.
- **Group function**  
For the user-friendly parameterization of numerous devices or applications of the same type, the programs of the SIRIUS ES software family offer a group function which enables the parameterization of several devices to be read out or written through PROFIBUS. In conjunction with typicals it is even possible to selectively adapt the same parameters in any number of parameterizations.
- **Teleservice through MPI**  
The premium versions of the SIRIUS ES software families support the use of MPI Teleservice (comprising the Teleservice software and various Teleservice adapters) for remote diagnostics of the devices. This facilitates diagnostics and maintenance, and it shortens response times for service purposes.



Efficient engineering and startup with graphic interfaces and diagnostics options

## Types of delivery and license

The programs of the SIRIUS ES software family are available as follows:

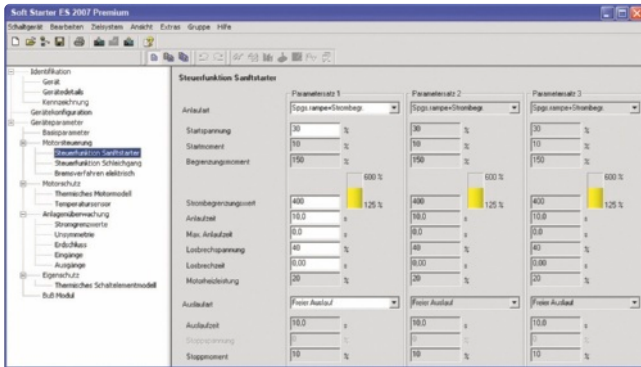
- Floating license – the license for any one user at any one time
  - Authorizes any one user
  - Independent of the number of installations (unlike the single license which is allowed to be installed once only)
  - Only the actual use of the program has to be licensed
  - Trial license (free use of all program functions for 14 days for test and evaluation purposes, included on every product CD, available in the download file of the SIRIUS ES program in the Service&Support portal).

Following delivery versions are available in addition for the programs of the SIRIUS ES software family:

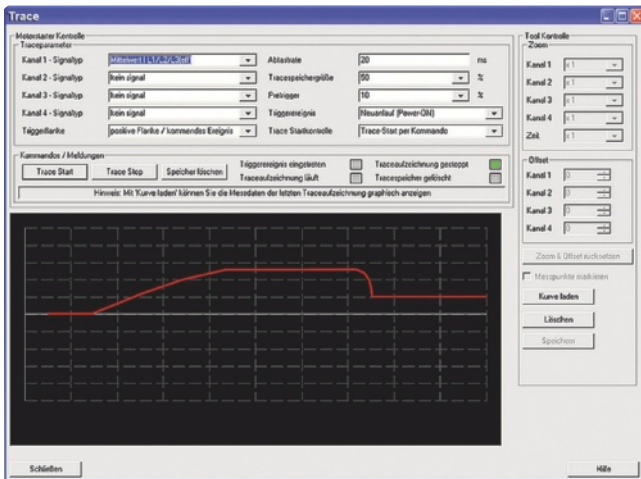
- Upgrade
  - Upgrade from an old to a new version with expanded functions, e. g. upgrade from Motor Starter ES 2006 to Motor Starter ES 2007
- Powerpack
  - Special pack for switching within the same software version to a more powerful version with more functionality, e. g. Powerpack Motor Starter ES 2007 for switching from Standard to Premium
- Software Update Service
  - To keep you up to date at all times we offer a special service which supplies you automatically with all service packs and upgrades

## Soft Starter ES

### Overview



Easy and clearly arranged parameter setting of the 3RW44 soft starter with Soft Starter ES 2007



Graphic presentation of measured values with the trace function (oscilloscope function) of Soft Starter ES 2007 Standard and Premium

### Soft Starter ES 2007

The Soft Starter ES software permits the quick and easy parameterization, monitoring and diagnostics of SIRIUS 3RW44 High-Feature soft starters for service purposes. The device parameters can be configured directly on the PC and transferred to the soft starter through a serial cable or an optional PROFIBUS interface.

The advantages of Soft Starter ES:

- Clearly arranged configuring of device functions and their parameters – online and offline
- Effective diagnostics functions on the soft starter and display of the most important measured values
- Trace function (oscilloscope function) for recording measured values and events (in the Soft Starter ES Standard and Premium software versions)

### Efficient engineering with new program versions

The Soft Starter ES software program is available in three versions which differ in their user-friendliness, scope of functions and price.

Soft Starter ES	Basic	Standard	Premium
Access through the local interface on the device	✓	✓	✓
Parameter assignment	✓	✓	✓
Operating	✓	✓	✓
Diagnostics	✓	✓	✓
Creating typicals	--	✓ <sup>1)</sup>	✓
Exporting parameters	--	✓	✓
Comparison functions	--	✓	✓
Standards-conform printout according to EN ISO 7200	--	✓	✓
Service data (slave pointer, statistics data)	--	✓	✓
Access through PROFIBUS	--	--	✓
Group functions	--	--	✓
Teleservice through MPI	--	--	✓
S7 Routing	--	--	✓
STEP7 Object Manager	--	--	✓

✓ Function available

-- Function not available

<sup>1)</sup> Typicals with Service Pack 1 and higher.

### More functions

- Standards-conform printouts  
The software tool greatly simplifies machine documentation. Parameterization printouts according to EN ISO 7200 are possible. The elements to be printed are easy to select and compile as required.
- Easy creation of typicals  
Typicals can be created for devices and applications with only minimum differences in their parameters. These typicals contain all the parameters which are needed for the parameterization. In addition it is possible to specify which of these parameters are fixed and which can be adapted, e. g. by the startup engineer.
- Group function  
For the user-friendly parameterization of numerous devices or applications of the same type, the programs of the SIRIUS ES software family offer a group function which enables the parameterization of several devices to be read out or written through PROFIBUS. In conjunction with typicals it is even possible to selectively adapt the same parameters in any number of parameterizations.
- Teleservice through MPI  
The Soft Starter ES Premium version supports the use of MPI Teleservice (comprising the Teleservice software and various Teleservice adapters) for remote diagnostics of the devices. This facilitates diagnostics and maintenance, and it shortens response times for service purposes.

### Types of delivery and license

Soft Starter ES is available as follows:

- Floating license – the license for any one user at any one time
  - Authorizes any one user
  - Independent of the number of installations (unlike the single license which is allowed to be installed once only)
  - Only the actual use of the program has to be licensed
  - Trial license (free use of all program functions for 14 days for test and evaluation purposes, included on every product CD, available in the download file of the SIRIUS ES program in the Service&Support portal).

Following delivery versions are available in addition for Soft Starter ES 2007:

- Upgrade  
Upgrade from an old to a new version with expanded functions, e. g. upgrade from Soft Starter ES 2006 to Soft Starter ES 2007

- Powerpack  
Special pack for switching within the same software version to a more powerful version with more functionality, e. g. Powerpack Soft Starter ES 2007 for switching from Standard to Premium
- Software Update Service  
To keep you up to date at all times we offer a special service which supplies you automatically with all service packs and upgrades

### New licensing procedure

To make licensing easier, the three versions of Soft Starter ES are available with immediate effect with the following license:

14 day trial license for Premium functions: for test and evaluation purposes, included on every product CD, available also in the download file of the SIRIUS Soft Starter ES 2007 program in the Service&Support portal.

### System requirements

Soft Starter ES 2007 parameterization, start-up and diagnostics software for the SIRIUS 3RW44 soft starter	Basic/Standard	Premium
	Firmware version $\geq$ *E04* <sup>1)</sup>	Firmware version $\geq$ *E06* <sup>2)</sup>
<b>Operating system</b>	Windows XP Professional (Service Pack 2), Windows Vista Ultimate 32/Business 32 <sup>3)</sup>	
<b>Processor</b>	$\geq$ Pentium 800 MHz/ $\geq$ 1 GHz (Windows Vista)	
<b>RAM</b>	$\geq$ 512 MB/ $\geq$ 1 GB (Windows Vista)	
<b>Free space on hard disk</b>	$\geq$ 150 MB	
<b>CD-ROM/DVD drive</b>	Yes (only when installing from CD)	
<b>Serial interface (COM)</b>	Yes	
<b>PC cable/parameterization cable/connection cable</b>	Yes	
<b>PROFIBUS communication module (optional)</b>	--	Yes

<sup>1)</sup> SIRIUS 3RW44 with firmware version  $\geq$  \*E04\*. Installed in starters delivered after December 2005.

<sup>2)</sup> SIRIUS 3RW44 with firmware version  $\geq$  \*E06\*. Installed in starters delivered after May 2006.

<sup>3)</sup> Windows Vista Ultimate 32/Business 32 with Soft Starter ES 2007 + Service Pack 1 and higher.

### Selection and ordering data

#### Soft Starter ES parameterization and service software for SIRIUS 3RW44 soft starters

- Can be run under WIN XP PROF/ Windows Vista Ultimate 32/Business 32
- Without PC cable

Version	DT	Order No.	Price per PU	PU (UNIT, SET, M)	PS*	PG	Weight per PU approx. kg
<b>Soft Starter ES 2007 Basic</b>							
<b>Floating license for one user</b>							
E-SW, software and documentation on CD, 3 languages (English/French/German), communication through system interface							
• License key on USB stick, Class A, including CD							
	B	<b>3ZS1 313-4CC10-0YA5</b>		1	1 unit	131	0.230

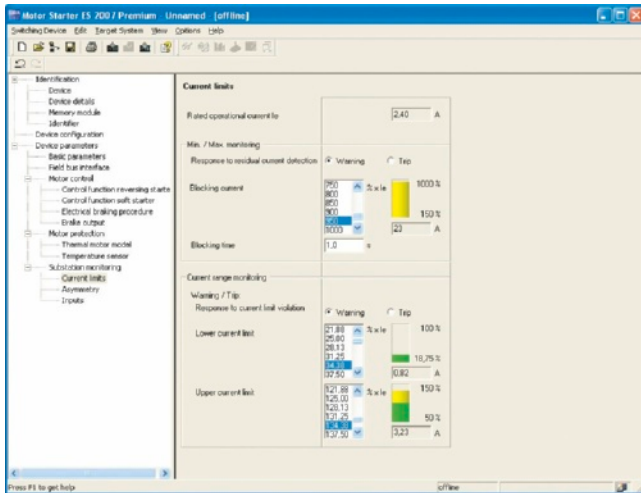
# Planning, Configuration and Visualizing for SIRIUS

## Soft Starter ES

Version	DT	Order No.	Price per PU	PU (UNIT, SET, M)	PS*	PG	Weight per PU approx. kg
<b>Soft Starter ES 2007 Standard</b>							
<b>Floating license for one user</b>							
E-SW, software and documentation on CD, 3 languages (English/French/German), communication through system interface							
• License key on USB stick, Class A, including CD	B	<b>3ZS1 313-5CC10-0YA5</b>		1	1 unit	131	0.230
<b>Upgrade for Soft Starter ES 2006</b>							
Floating license for one user, E-SW, software and documentation on CD, license key on USB stick, Class A, 3 languages (German/English/French), communication through the system interface							
	B	<b>3ZS1 313-5CC10-0YE5</b>		1	1 unit	131	0.230
<b>Powerpack for Soft Starter ES 2007 Basic</b>							
Floating license for one user, E-SW, license key on USB stick, Class A, 3 languages (German/English/French), communication through the system interface							
	B	<b>3ZS1 313-5CC10-0YD5</b>		1	1 unit	131	0.230
<b>Software Update Service</b>							
For one year with automatic extension, assuming the current software version is in use, E-SW, software and documentation on CD, communication through the system interface							
	▶	<b>3ZS1 313-5CC10-0YL5</b>		1	1 unit	131	0.230
<b>Soft Starter ES 2007 Premium</b>							
<b>Floating license for one user</b>							
E-SW, software and documentation on CD, 3 languages (German/English/French), communication through system interface or PROFIBUS							
• License key on USB stick, Class A, including CD	B	<b>3ZS1 313-6CC10-0YA5</b>		1	1 unit	131	0.230
<b>Upgrade for Soft Starter ES 2006</b>							
Floating license for one user, E-SW, software and documentation on CD, license key on USB stick, Class A, 3 languages (German/English/French), communication through the system interface or PROFIBUS							
	B	<b>3ZS1 313-6CC10-0YE5</b>		1	1 unit	131	0.230
<b>Powerpack for Soft Starter ES 2007 Standard</b>							
Floating license for one user, E-SW, license key on USB stick, Class A, 3 languages (German/English/French), communication through the system interface or PROFIBUS							
	▶	<b>3ZS1 313-6CC10-0YD5</b>		1	1 unit	131	0.230
<b>Software Update Service</b>							
For 1 year with automatic extension, assuming the current software version is in use, E-SW, software and documentation on CD, communication through the system interface or PROFIBUS							
	▶	<b>3ZS1 313-6CC10-0YL5</b>		1	1 unit	131	0.230
<b>Accessories</b>							
<b>PC cable for PC/PG communication,</b>							
Through the system interface on the device, for connecting to the serial interface on the PC/PG							
	A	<b>3UF7 940-0AA00-0</b>		1	1 unit	131	0.150
<b>Optional PROFIBUS communication module for SIRIUS 3RW44</b>							
	A	<b>3RW4 900-0KC00</b>		1	1 unit	131	0.320
<b>USB/serial adapters</b>							
To connect a serial PC cable (for connection to the serial PC interface/RS 232), we recommend using 3RK3 modular safety system, 3RW44 soft starter, ET 200S/ECOFAST/ET 200pro motor starter, AS-i safety monitor and AS-i analyzer in conjunction with SIMOCODE pro 3UF7							
	B	<b>3UF7 946-0AA00-0</b>		1	1 unit	131	0.150

\* You can order this quantity or a multiple thereof.

## Overview



Motor Starter ES for parameterization, monitoring, diagnostics and testing of motor starters

### Motor Starter ES 2007

Motor Starter ES is used for start-up, parameterization, diagnostics, documentation and the preventative maintenance of the motor starters of the SIMATIC ET 200S, ET 200pro, ECOFAST and M200D product families.

Interfacing is performed

- Through the local interface on the device
- With PROFIBUS DP V1 capable motor starters from any point in PROFIBUS or in PROFINET (applies for ET 200pro/ECOFAST/M200D)
- With PROFIBUS-capable motor starters from any point in PROFINET or PROFIBUS (applies for M200D).

Using Motor Starter ES, the communication-capable motor starters are easily parameterized during start-up, monitored during normal operation and successfully diagnosed for service purposes. Preventative maintenance is supported by a function for reading out diverse statistical data (e. g. operating hours, operating cycles, cut-off currents, etc.). The user is supported during these procedures with comprehensive Help functions and plain text displays.

The advantages of Motor Starter ES:

- Clearly arranged configuring of device functions and their parameters – online and offline
- Effective diagnostics functions on the soft starter and display of the most important measured values
- Trace function (oscilloscope function) for recording measured values and events (in the Motor Starter ES Standard and Premium software versions for M200D, PROFIBUS and PROFINET).

Motor Starter ES can either be used as a stand-alone program or it can be integrated into STEP 7 via an object manager.

### Efficient engineering with new program versions

The Motor Starter ES software program is available in three versions which differ in their user-friendliness, scope of functions and price.

Motor Starter ES	Basic	Standard	Premium
Access through the local interface on the device	✓	✓	✓
Parameter assignment	✓	✓	✓
Operating	✓	✓	✓
Diagnostics	--	✓	✓
Creating typicals	--	✓ <sup>1)</sup>	✓ <sup>1)</sup>
Comparison functions	--	✓	✓
Standards-conform printout according to EN ISO 7200	--	✓	✓
Service data (slave pointer, statistics data)	--	✓	✓
Access through PROFIBUS	--	--	✓
Access through PROFINET	--	--	✓ <sup>2)</sup>
S7 Routing	--	--	✓
Teleservice through MPI	--	--	✓
STEP 7 object manager	--	--	✓
Trace function	--	✓ <sup>2)</sup>	✓ <sup>2)</sup>

✓ Function available -- Function not available

<sup>1)</sup> Typicals with Service Pack 1 and higher.

<sup>2)</sup> Trace function and access through PROFINET Service Pack 2 and higher.

Motor Starter ES	Basic	Standard	Premium
ET 200S High Feature PROFIBUS IM	✓	✓	--
ET 200S High Feature PROFINET IM	✓	✓	--
ECOFAST AS-Interface High Feature	✓	✓	--
ECOFAST PROFIBUS	✓	✓	✓
ET 200pro PROFIBUS IM	✓	✓	✓
ET 200pro PROFINET IM	✓	✓	✓
M200D AS-Interface Standard	✓ <sup>1)</sup>	✓ <sup>1)2)</sup>	--
M200D PROFIBUS	✓ <sup>1)</sup>	✓ <sup>1)</sup>	✓ <sup>1)</sup>
M200D PROFINET	✓ <sup>1)</sup>	✓ <sup>1)</sup>	✓ <sup>1)</sup>

✓ Function available -- Function not available

<sup>1)</sup> With Service Pack 2 and higher.

<sup>2)</sup> Trace function is not supported.

### More functions

- Standards-conform printouts  
The software tool greatly simplifies machine documentation. Parameterization printouts according to EN ISO 7200 are possible. The elements to be printed are easy to select and compile as required.
- Easy creation of typicals  
Typicals can be created for devices and applications with only minimum differences in their parameters. These typicals contain all the parameters which are needed for the parameterization. In addition it is possible to specify which of these parameters are fixed and which can be adapted, e. g. by the startup engineer.
- Teleservice through MPI  
The Motor Starter ES Premium version supports the use of MPI Teleservice (comprising the Teleservice software and various Teleservice adapters) for remote diagnostics of the devices. This facilitates diagnostics and maintenance, and it shortens response times for service purposes.

## Motor Starter ES

### Types of delivery and license

Motor Starter ES is available as follows:

- Floating license – the license for any one user at any one time
  - Authorizes any one user
  - Independent of the number of installations (unlike the single license which is allowed to be installed once only)
  - Only the actual use of the program has to be licensed
  - Trial license (free use of all program functions for 14 days for test and evaluation purposes, included on every product CD, available in the download file of the SIRIUS ES program in the Service&Support portal).

Following delivery versions are available in addition for Motor Starter ES 2007:

- Upgrade
  - Upgrade from an old to a new version with expanded functions, e. g. upgrade from Motor Starter ES 2006 to Motor Starter ES 2007

- Powerpack
  - Special pack for switching within the same software version to a more powerful version with more functionality, e. g. Powerpack Motor Starter ES 2007 for switching from Standard to Premium
- Software Update Service
  - To keep you up to date at all times we offer a special service which supplies you automatically with all service packs and upgrades

### System requirements

#### Parameterization, start-up and diagnostics software Motor Starter ES 2007

For ECOFAST Motor Starter, SIMATIC ET 200S High-Feature Starter, SIMATIC ET 200pro Starter and M200D (AS-I Standard, PROFIBUS, PROFINET)

<b>Operating system</b>	Windows XP Professional (Service Pack 2, Service Pack 3 <sup>1)</sup> ), Windows Vista Ultimate 32/Business 32 <sup>2)</sup> (Service Pack 1 <sup>3)</sup> )
<b>Processor</b>	≥ Pentium 800 MHz/≥ 1 GHz (Windows Vista)
<b>RAM</b>	≥ 512 MB/≥ 1 GB (Windows Vista)
<b>Monitor resolution</b>	≥ 1024 x 768
<b>Free space on hard disk<sup>4)</sup></b>	≥ 400 MB
<b>CD-ROM/DVD drive</b>	Yes (only when installing from CD)
<b>Serial interface (COM)</b>	Yes
<b>PC cable/parameterization cable/connection cable</b>	Yes
<b>PROFIBUS card/PROFIBUS processor</b>	Optional, for parameterization and diagnostics through PROFIBUS
<b>Ethernet interface/PROFINET card</b>	Optional, for parameterization and diagnostics through PROFINET

<sup>1)</sup> Windows XP Professional Service Pack 3 with Motor Starter ES 2007 + SP2 and higher.

<sup>2)</sup> Windows Vista Ultimate 32/Business 32 with Motor Starter ES 2007 + SP1 and higher.

<sup>3)</sup> Windows Vista Ultimate 32/Business 32 Service Pack 1 with Motor Starter ES 2007 + SP2 and higher.

<sup>4)</sup> Allow for additional free space, e. g. for swap-out files.

## Selection and ordering data

### Parameterization, start-up and diagnostics software Motor Starter ES 2007

For ECOFAST Motor Starter, SIMATIC ET 200S High Feature Starter, SIMATIC ET 200pro Starter and M200D (AS-I Standard, PROFIBUS, PROFINET)

- Can be run under WIN XP PROF/Windows Vista Ultimate 32/Business 32
- Without PC cable

Version	DT	Order No.	Price per PU	PU (UNIT, SET, M)	PS*	PG	Weight per PU approx. kg
---------	----	-----------	--------------	-------------------	-----	----	--------------------------

#### Motor Starter ES 2007 Basic

##### Floating license for one user

E-SW, software and documentation on CD, 3 languages (English/French/German), communication through system interface

- License key on USB stick, Class A, including CD

B	<b>3ZS1 310-4CC10-0YA5</b>	1	1 unit	121	0.230
---	----------------------------	---	--------	-----	-------



## Motor Starter ES

Version	DT	Order No.	Price per PU	PU (UNIT, SET, M)	PS*	PG	Weight per PU approx. kg
---------	----	-----------	--------------	-------------------	-----	----	--------------------------

**Motor Starter ES 2007 Standard****Floating license for one user**

E-SW, software and documentation on CD, 3 languages (English/French/German), communication through system interface

- License key on USB stick, Class A, including CD

B	<b>3ZS1 310-5CC10-0YA5</b>	1	1 unit	121	0.230
---	----------------------------	---	--------	-----	-------

**Upgrade for Motor Starter ES 2006**

Floating license for one user, E-SW, software and documentation on CD, license key on USB stick, Class A, 3 languages (German/English/French), communication through the system interface

B	<b>3ZS1 310-5CC10-0YE5</b>	1	1 unit	121	0.230
---	----------------------------	---	--------	-----	-------

**Powerpack for Motor Starter ES 2007 Basic**

Floating license for one user, E-SW, software and documentation on CD, license key on USB stick, Class A, 3 languages (German/English/French), communication through the system interface

B	<b>3ZS1 310-5CC10-0YD5</b>	1	1 unit	121	0.230
---	----------------------------	---	--------	-----	-------

**Software Update Service**

For one year with automatic extension, assuming the current software version is in use, E-SW, software and documentation on CD, communication through the system interface

B	<b>3ZS1 310-5CC10-0YL5</b>	1	1 unit	121	0.230
---	----------------------------	---	--------	-----	-------

**Motor Starter ES 2007 Premium****Floating license for one user**

E-SW, software and documentation on CD, 3 languages (German/English/French), communication through system interface or PROFIBUS

- License key on USB stick, Class A, including CD

B	<b>3ZS1 310-6CC10-0YA5</b>	1	1 unit	121	0.230
---	----------------------------	---	--------	-----	-------

**Upgrade for Motor Starter ES 2006**

Floating license for one user, E-SW, software and documentation on CD, license key on USB stick, Class A, 3 languages (German/English/French), communication through the system interface or PROFIBUS

B	<b>3ZS1 310-6CC10-0YE5</b>	1	1 unit	121	0.230
---	----------------------------	---	--------	-----	-------

**Powerpack for Motor Starter ES 2007 Standard**

Floating license for one user, E-SW, software and documentation on CD, license key on USB stick, Class A, 3 languages (German/English/French), communication through the system interface or PROFIBUS

B	<b>3ZS1 310-6CC10-0YD5</b>	1	1 unit	121	0.230
---	----------------------------	---	--------	-----	-------

**Software Update Service**

For 1 year with automatic extension, assuming the current software version is in use, E-SW, software and documentation on CD, communication through the system interface or PROFIBUS

B	<b>3ZS1 310-6CC10-0YL5</b>	1	1 unit	121	0.230
---	----------------------------	---	--------	-----	-------

**Accessories****For ET 200S High Feature motor starters**

- Control module 2DI DC 24 V COM, for ET 200S High-Feature starter, Failsafe Starter A
- LOGO! PC cables

A	<b>3RK1 903-0CH10</b>	1	1 unit	121	0.025
---	-----------------------	---	--------	-----	-------

A	<b>6ED1 057-1AA00-0BA0</b>	1	1 unit	200	0.168
---	----------------------------	---	--------	-----	-------

**For ET 200pro motor starters**

- RS 232 interface cable, serial data connection between ET 200pro MS/FC and laptop/PC/PG or MS

B	<b>3RK1 922-2BP00</b>	1	1 unit	121	0.330
---	-----------------------	---	--------	-----	-------

**For ECOFAST High Feature motor starters (interface cable)**

- PC cables

B	<b>3RK1 911-0BN20</b>	1	1 unit	121	0.162
---	-----------------------	---	--------	-----	-------

**USB/serial adapters**

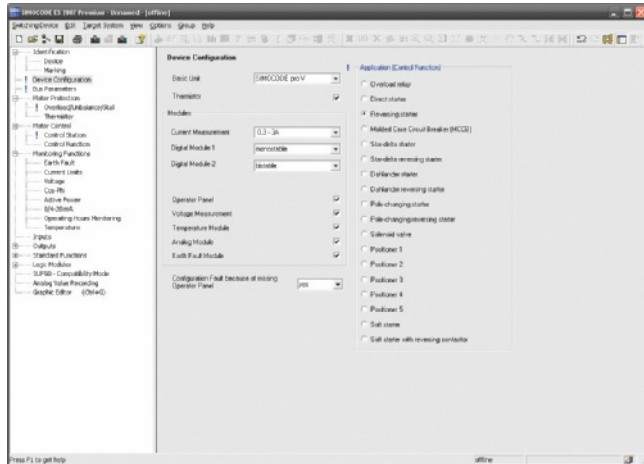
To connect a serial PC cable (for connection to the serial PC interface/RS 232), we recommend using 3RK3 modular safety system, 3RW44 soft starter, ET 200S/ECOFAST/ET 200pro motor starter, AS-i safety monitor, AS-i analyzer in conjunction with SIMOCODE pro 3UF7

B	<b>3UF7 946-0AA00-0</b>	1	1 unit	131	0.150
---	-------------------------	---	--------	-----	-------

## SIMOCODE ES

### Overview

*SIMOCODE ES: the uniform software for more plant availability*



Selection of predefined control functions SIMOCODE ES

SIMOCODE ES is the central software for SIMOCODE pro start-up, operation and diagnostics. Unnecessary plant downtimes can be consistently prevented, for example by changing parameters online during operation. Control functions, protection functions and the wiring of the control circuit are implemented in SIMOCODE pro by predefined control functions and can be readily configured using SIMOCODE ES.

#### SIMOCODE ES is available in three different versions

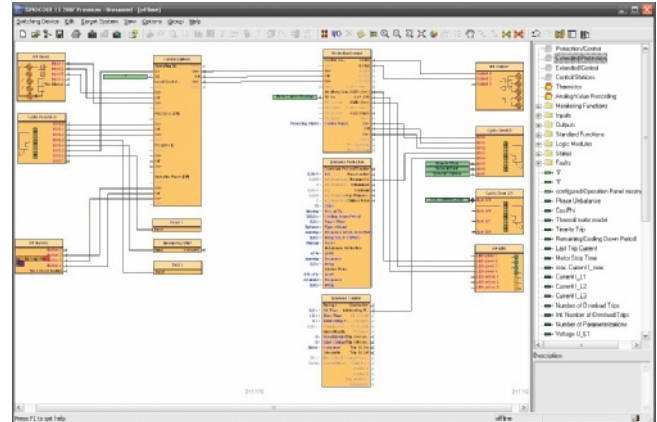
The user can choose between three different versions of SIMOCODE ES: SIMOCODE ES Basic, SIMOCODE ES Standard and SIMOCODE ES Premium. While SIMOCODE ES Basic is a powerful tool for startup or maintenance personnel, SIMOCODE ES Standard and Premium are the perfect tools for engineers or configurators on account of their larger scope of functions and integrated graphics editor. Unlike the Standard version, SIMOCODE ES Premium also permits parameterization and diagnostics through PROFIBUS. Indication of all operating, service and diagnostics data supplies important information about the current state of the motor and plant at all times – everywhere on the PROFIBUS.

#### Object manager for SIMATIC S7

The object manager is a component of SIMOCODE ES Premium. Thanks to this software tool, SIMOCODE ES is totally integrated in SIMATIC S7. If the two software packages are installed on the PG/PC with which the SIMATIC S7 hardware configuration is performed, then SIMOCODE ES can be called up directly from STEP 7.

#### Integrated graphics editor: parameterizing by Drag&Drop

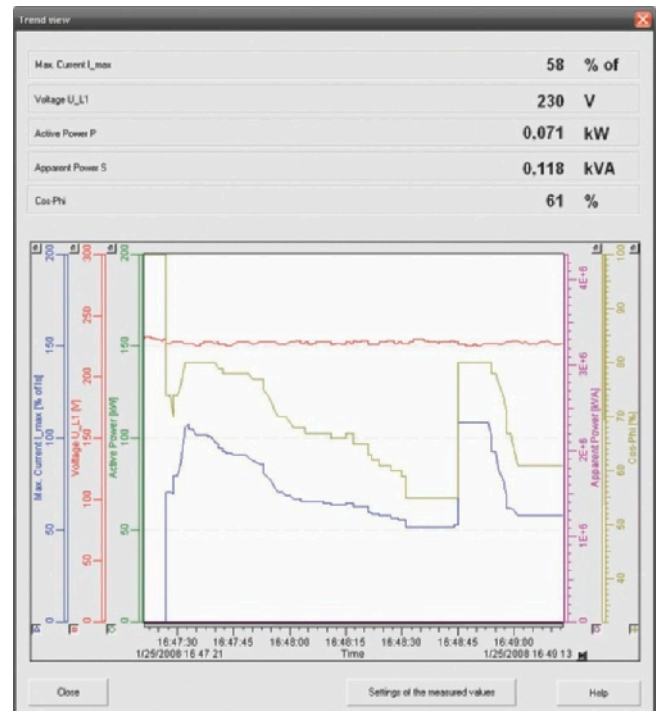
The graphics editor is a part of SIMOCODE ES Standard and SIMOCODE ES Premium. It adds to the parameterizing interface a powerful tool which enables the easy parameterization of devices by Drag&Drop. The extremely compact documentation of all configured parameters is possible, as is the graphic online presentation of the configured device functions including all signal states during operation.



Easy and ergonomic parameterizing with the graphics editor

#### Trend display of measured values

With this online function, SIMOCODE ES Standard or Premium can present the trend of up to five different measured values. It is thus possible for example to record and evaluate the start-up characteristic of a motor or its behavior in different load conditions.



Trend displays of measured values in SIMOCODE ES

SIMOCODE ES	Basic	Standard	Premium
Access through the local interface on the device	✓	✓	✓
Parameter assignment	✓	✓	✓
Operating	✓	✓	✓
Diagnostics	✓	✓	✓
Test	✓	✓	✓
Service data	✓	✓	✓
Parameterizing with the integrated graphics editor	--	✓	✓
Creating typicals	--	✓	✓
Exporting parameters	--	✓	✓
Comparison functions	--	✓	✓
Trend display of measured values	--	✓	✓
Parameter comparison	--	✓	✓
Analog value recording <sup>1)</sup>	--	✓	✓
Standards-conform printout according to EN ISO 7200	--	✓	✓
Group functions	--	--	✓
Access through PROFIBUS	--	--	✓
Teleservice through MPI	--	--	✓
S7 Routing	--	--	✓
STEP7 Object Manager	--	--	✓

✓ Function available

-- Function not available

<sup>1)</sup> For SIMOCODE pro V.

## More functions

In addition to device-specific parameterization, SIMOCODE ES 2007 also offers the following functionality in a uniform look and feel. These functions are available in many SIRIUS ES programs.

- **Standards-conform printouts**  
The software tool greatly simplifies machine documentation. Parameterization printouts according to EN ISO 7200 are possible. The elements to be printed are easy to select and compile as required.
- **Easy creation of typicals**  
Typicals can be created for devices and applications with only minimum differences in their parameters. These typicals contain all the parameters which are needed for the parameterization. In addition it is possible to specify which of these parameters are fixed and which can be adapted, e. g. by the startup engineer.
- **Group function**  
For the user-friendly parameterization of numerous devices or applications of the same type, the programs of the SIRIUS ES software family offer the group function which enables the parameterization of several devices to be read out or written through PROFIBUS. In conjunction with typicals it is even possible to selectively adapt the same parameters in any number of parameterizations.
- **Teleservice through MPI**  
The Motor Starter ES Premium version supports the use of MPI Teleservice (comprising the Teleservice software and various Teleservice adapters) for remote diagnostics of the devices. This facilitates diagnostics and maintenance, and it shortens response times for service purposes.

## Types of delivery and license

SIMOCODE ES is available as follows:

- **Floating license** – the license for any one user at any one time
  - Authorizes any one user
  - Independent of the number of installations (unlike the single license which is allowed to be installed once only)
  - Only the actual use of the program has to be licensed
  - Trial license (free use of all program functions for 14 days for test and evaluation purposes, included on every product CD, available in the download file of the SIRIUS ES program in the Service&Support portal).

Following delivery versions are available in addition for SIMOCODE ES 2007:

- **Upgrade**  
Upgrade from an old to a new version with expanded functions, e. g. upgrade from SIMOCODE ES 2004 to SIMOCODE ES 2007
- **Powerpack**  
Special pack for switching within the same software version to a more powerful version with more functionality, e. g. Powerpack SIMOCODE ES 2007 for switching from Standard to Premium
- **Software Update Service**  
To keep you up to date at all times we offer a special service which supplies you automatically with all service packs and upgrades

# Planning, Configuration and Visualizing for SIRIUS

## SIMOCODE ES

### System requirements

SIMOCODE ES 2007 parameterization, start-up and diagnostics software for SIMOCODE pro	
<b>Operating system</b>	Windows XP Professional (Service Pack 2), Windows Vista Ultimate 32/Business 32 <sup>1)</sup>
<b>Processor</b>	≥ Pentium 800 MHz/≥ 1 GHz (Windows Vista)
<b>RAM</b>	≥ 512 MB/≥ 1 GB (Windows Vista)
<b>Monitor resolution</b>	≥ 1024 x 768
<b>Free space on hard disk</b>	≥ 280 MB
<b>CD-ROM/DVD drive</b>	Yes (only when installing from CD)
<b>Serial interface (COM)</b>	Yes
<b>PC cable/parameterization cable/connection cable</b>	Yes
<b>PROFIBUS card/PROFIBUS processor</b>	Optional, for parameterization and diagnostics through PROFIBUS

<sup>1)</sup> Windows Vista Ultimate 32/Business 32 with SIMOCODE ES 2007 + Service Pack 1 and higher.

### Selection and ordering data

#### Parameterization and service software for SIMOCODE pro 3UF7

- Can be run under WIN XP PROF/  
Windows Vista Ultimate 32/Business 32
- Without PC cable

Version	DT	Order No.	Price per PU	PU (UNIT, SET, M)	PS*	PG	Weight per PU approx. kg
<b>SIMOCODE ES 2007 Basic</b>							
<b>Floating license for one user</b>							
E-SW, software and documentation on CD, 3 languages (English/French/German), communication through system interface							
• License key on USB stick, Class A, including CD ▶		<b>3ZS1 312-4CC10-0YA5</b>		1	1 unit	131	0.230
<b>SIMOCODE ES 2007 Standard</b>							
<b>Floating license for one user</b>							
E-SW, software and documentation on CD, 3 languages (English/French/German), communication through system interface							
• License key on USB stick, Class A, including CD ▶		<b>3ZS1 312-5CC10-0YA5</b>		1	1 unit	131	0.230
<b>Upgrade for SIMOCODE ES 2004 and later</b> ▶		<b>3ZS1 312-5CC10-0YE5</b>		1	1 unit	131	0.230
Floating license for one user, E-SW, software and documentation on CD, license key on USB stick, Class A, 3 languages (German/English/French), communication through the system interface							
<b>Powerpack for SIMOCODE ES 2007 Basic</b> ▶		<b>3ZS1 312-5CC10-0YD5</b>		1	1 unit	131	0.230
Floating license for one user, E-SW, license key on USB stick, Class A, 3 languages (German/English/French), communication through the system interface							
<b>Software Update Service</b> ▶		<b>3ZS1 312-5CC10-0YL5</b>		1	1 unit	131	0.230
For one year with automatic extension, assuming the current software version is in use, E-SW, software and documentation on CD, communication through the system interface							

\* You can order this quantity or a multiple thereof.

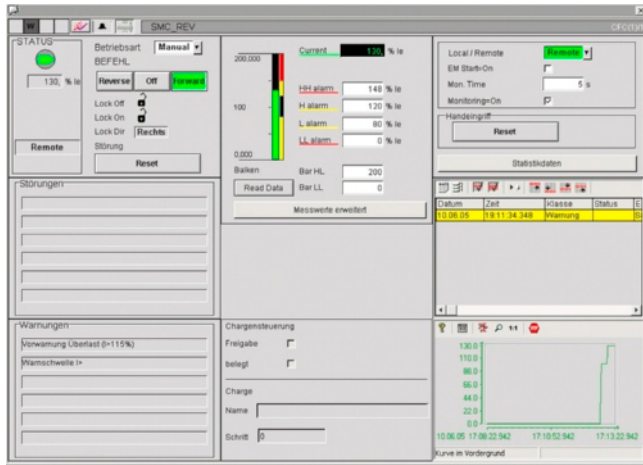
# Planning, Configuration and Visualizing for SIRIUS

## SIMOCODE ES

Version	DT	Order No.	Price per PU	PU (UNIT, SET, M)	PS*	PG	Weight per PU approx. kg
<b>SIMOCODE ES 2007 Premium</b>							
<b>Floating license for one user</b>							
E-SW, software and documentation on CD, 3 languages (German/English/French), communication through system interface or PROFIBUS							
• License key on USB stick, Class A, including CD ▶							
		<b>3ZS1 312-6CC10-0YA5</b>		1	1 unit	131	0.230
<b>Upgrade for SIMOCODE ES 2004 and later</b> ▶							
		<b>3ZS1 312-6CC10-0YE5</b>		1	1 unit	131	0.230
Floating license for one user, E-SW, software and documentation on CD, license key on USB stick, Class A, 3 languages (German/English/French), communication through the system interface or PROFIBUS							
<b>Powerpack for SIMOCODE ES 2007 Standard</b> ▶							
		<b>3ZS1 312-6CC10-0YD5</b>		1	1 unit	131	0.230
Floating license for one user, E-SW, license key on USB stick, Class A, 3 languages (German/English/French), communication through the system interface or PROFIBUS							
<b>Software Update Service</b> ▶							
		<b>3ZS1 312-6CC10-0YL5</b>		1	1 unit	131	0.230
For 1 year with automatic extension, assuming the current software version is in use, E-SW, software and documentation on CD, communication through the system interface or PROFIBUS							
<b>Accessories</b>							
<b>PC cables for PC/PG communication</b>							
	A	<b>3UF7 940-0AA00-0</b>		1	1 unit	131	0.150
Through the system interface on the device, for connecting to the serial interface on the PC/PG							
<b>USB/serial adapters</b>							
	B	<b>3UF7 946-0AA00-0</b>		1	1 unit	131	0.150
To connect a serial PC cable (for connection to the serial PC interface/RS 232), we recommend using 3RK3 modular safety system, 3RW44 soft starter, ET 200S/ECOFAS/ET 200pro motor starter, AS-i safety monitor and AS-i analyzer in conjunction with SIMOCODE pro 3UF7							

## SIMOCODE pro function block library for SIMATIC PCS 7

### Overview



SIMOCODE pro function block library for SIMATIC PCS 7

### SIMOCODE pro function block library for SIMATIC PCS 7

The SIMOCODE pro PCS 7 function block library can be used for simple and easy integration of SIMOCODE pro into the SIMATIC PCS 7 process control system. The SIMOCODE pro PCS 7 function block library contains the diagnostics and driver blocks corresponding with the diagnostics and driver concept of SIMATIC PCS 7 as well as the elements (symbols and faceplate) required for operator control and process monitoring.

The application is integrated by graphic interconnection using the CFC Editor. The technological and signal processing functions of the SIMOCODE pro PCS 7 function block library are based on the SIMATIC PCS 7 standard libraries (driver blocks, technological blocks) and are optimally tailored to SIMOCODE pro.

Users who previously configured motor feeder circuits using conventional technology by means of signal blocks and motor or valve blocks, can now easily switch to the SIMOCODE pro PCS 7 function block library.

### Types of delivery and license

The SIMOCODE pro PCS 7 function block library supplied on CD-ROM allows the user to run the required engineering software on the engineering station (single license) including the runtime software for executing the AS modules in an automation system (single license). If the AS modules are to be used in additional automation systems, the corresponding number of runtime licenses are required which are supplied without a data carrier.

### Selection and ordering data

Version	DT	Order No.	Price per PU	PU (UNIT, SET, M)	PS*	PG	Weight per PU approx. kg
---------	----	-----------	--------------	-------------------	-----	----	--------------------------

#### SIMOCODE pro function block library for SIMATIC PCS 7



3UF7 982-0AA00-0

#### SIMOCODE pro function block library for SIMATIC PCS 7

##### Scope of supply:

AS modules and faceplates for integrating SIMOCODE pro into the PCS 7 process control system, for PCS 7 Version V6.0 engineering software for one engineering station (single license) including runtime software for execution of the AS module in an automation system (single license), German/English/French,

##### Type of delivery:

CD incl. electronic documentation

• For PCS 7 Version V 6.0	A	<b>3UF7 982-0AA00-0</b>		1	1 unit	131	0.240
• For PCS 7 Version V 6.1	A	<b>3UF7 982-0AA02-0</b>		1	1 unit	131	0.240
• For PCS 7 Version V 7.0	A	<b>3UF7 982-0AA10-0</b>		1	1 unit	131	0.240

##### AS modules

##### for integrating SIMOCODE pro in the PCS 7 process control system

Runtime software for execution of the AS module in an automation system (single license), Type of delivery: License without software and documentation

• For PCS 7 Version V 6.x	A	<b>3UF7 982-0AA01-0</b>		1	1 unit	131	0.001
• For PCS 7 Version V 7.x	A	<b>3UF7 982-0AA11-0</b>		1	1 unit	131	0.001

##### Upgrade for the PCS 7 function block library

##### SIMOCODE pro, V 6.0 or V 6.1

##### to version SIMOCODE pro V 7.0

for integrating SIMOCODE pro into the PCS 7 process control system, for PCS 7 Version V 7.0 (single license), German/English/French,

##### Type of delivery:

CD incl. electronic documentation

	A	<b>3UF7 982-0AA13-0</b>		1	1 unit	131	0.240
--	---	-------------------------	--	---	--------	-----	-------

\* You can order this quantity or a multiple thereof.

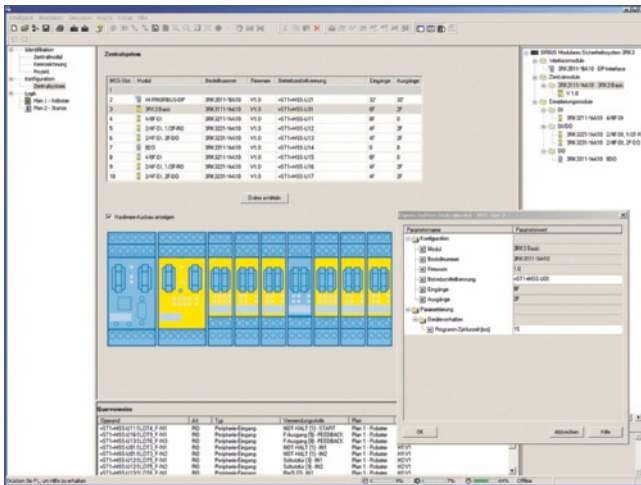
## Overview

### Modular Safety System ES: the uniform software for the modular safety system

Modular Safety System ES is the engineering software for the configuration, start-up and diagnostics of the 3RK3 modular safety system. The software combines the configuring of the hardware, the programming of the safety functions, and the testing and diagnostics of the safety system.

#### Hardware configuration

The configuration defines the system's hardware layout. It lays down which modules are used in the system: A central module as a safe control system including onboard peripherals, expansion modules with inputs and outputs, an interface module for connecting to PROFIBUS. For better clarity the layout is shown in a graphic presentation. For each module it is optionally possible to issue an equipment ID which is shown in the logic diagram for identification of the inputs and outputs.



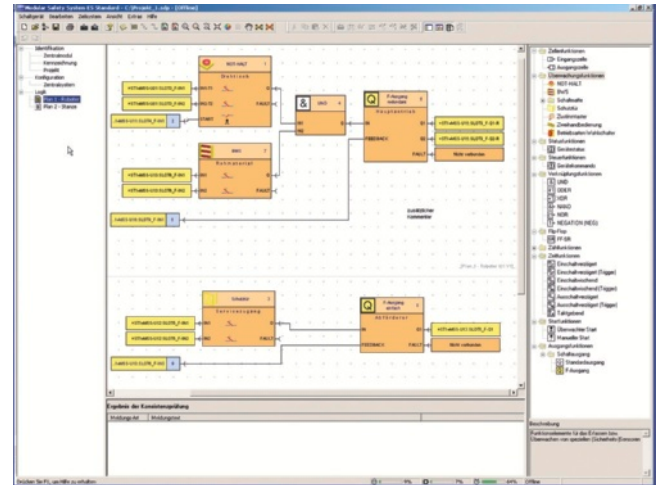
Definition of the hardware layout

#### Graphic parameterizing of the safety logic by Drag & Drop

The functionality of the safety logic is laid down with a graphics editor designed for intuitive operation. Safe monitoring functions (EMERGENCY-STOP, non-contact protective devices/light arrays, protective doors, etc.), output functions and logic functions (AND/OR operations, counting function, time functions, etc.), non-safety-orientated input/output functions, device status functions and control functions can be dragged from the extensive functions catalog onto the work interface by Drag&Drop. Depending on the version, each function has several input and output connecting points through which the functions can be interconnected by simple mouse clicks. Double-clicking on a function symbol opens the related features dialog window in which all the parameters can be displayed and configured: Scope of the function's inputs and outputs, configuring the channel type (one-channel/two-channel, NC contact/NO contact), activating the crossover monitoring, defining start options, assigning the hardware inputs and outputs, etc. Of course each function can be issued with an individual name so that e. g. the position of a safety switch in the plant can be documented.

The safety logic can be divided into several diagrams in order to enable structured processing of the entire plant. The user can freely position the functions on a quasi infinitely large drawing board, whereby the connecting lines are drawn automatically. If there is not enough space, more pages are automatically added to the diagram in horizontal or vertical direction. Connecting lines extending over several pages are automatically issued with cross-references during print-out. If required in the interest of clarity, the user can divide a connecting line manually into two segments, whereby the mutual reference is marked by reference arrows. For further documentation, freely compilable comment texts can be placed at any point in the diagram. Every point in the logic diagram can be processed with ease by dragging and zooming.

Every project can be saved as a file and be password-protected from unauthorized access.



Processing the safety functions with the graphics editor

#### User prompting during start-up and maintenance

To start up the 3RK3 modular safety system, the created project file is loaded into the device. This requires the serial interface (COM) of the PC to be connected with a special connection cable to the device. Access to the device can be password-protected.

After the project is loaded, the user switches the device by means of the software from configuring mode to test mode in which the safety functions are tested.

Activating the diagnostics shows the status of the individual functions in the graphic logic diagram by means of different colors and symbols. In addition, the signal status of each input and output can be manually overwritten ("forcing").

If the test is completed successfully, the user releases the configuration and switches the device to protection mode, in which case "forcing" is automatically deactivated.

Service personnel can activate the graphic diagnostics in protection mode as well. The I&M (Identification & Maintenance) data saved in the device facilitate maintenance.

## Modular Safety System ES

Modular Safety System ES	Basic	Standard
Access through the local interface on the device	✓	✓
Parameter assignment	✓	✓
Operating	✓	✓
Diagnostics	✓	✓
Test	✓	✓
Integrated graphics editor	✓	✓
Importing/exporting parameters		✓
Comparison functions		✓
Comfort functions		✓
Terminal designator		✓
Work on sub-diagrams		✓
Standards-conform printout according to EN ISO 7200	✓	✓

✓ Function available

-- Function not available

### More functions

- The program interface language can be switched during use between German, English and French.
- A context-sensitive help function provides useful assistance with questions concerning the use of the program.
- A consistency check informs clearly about function assignment errors; checks are carried out automatically when a project is saved and during the configuration test, but they can also be initially manually.
- Lists of symbols and cross-references can be issued output for effective processing of the project file.
- Standards-conform printouts:  
The programs of the SIRIUS ES software family make machine documentation far easier. They enable parameterization printouts according to EN ISO 7200. The elements to be printed are easy to select and group as required.

### System requirements

Modular Safety System ES 2008 parameterization, start-up and diagnostics software for the 3RK3 modular safety system	
<b>Operating system</b>	Windows XP Professional (Service Pack 2), Windows Vista Ultimate 32/Business 32
<b>Processor</b>	≥ Pentium 800 MHz/≥ 1 GHz (Windows Vista)
<b>RAM</b>	≥ 512 MB/≥ 1 GB (Windows Vista)
<b>Monitor resolution</b>	≥ 1024 x 768
<b>Free space on hard disk</b>	≥ 280 MB
<b>CD-ROM/DVD drive</b>	Yes (only when installing from CD)
<b>Serial interface (COM)</b>	Yes
<b>PC cables for PC/PG communication</b>	Yes

### Types of delivery and license

Modular Safety System ES 2008 is available as follows:

- Floating license
  - Package contains the software on CD and a floating license on a USB stick
  - The software can be installed on any number of PCs
  - The floating license enables the software to be used by one user; after use, it can be transferred from the one PC to another
  - The CD also contains a trial version for test and evaluation purposes (free use of all program functions on any PC for a period of 14 days).

Following delivery versions are available in addition for Modular Safety System ES 2008:

- Powerpack  
Special pack for switching within the same software version to a more powerful version with more functionality, e. g. Powerpack Modular Safety System ES 2008 for switching from Basic to Standard.
- Software Update Service  
To keep you up to date at all times we offer a special service which supplies you automatically with all service packs and upgrades (floating license not included in delivery)

The software can be downloaded free from the Internet (without floating license) at:

[support.automation.siemens.com/WW/view/en/25801078/133100](http://support.automation.siemens.com/WW/view/en/25801078/133100)

The download file also contains a trial license for test and evaluation purposes, which allows free use of all program functions on any PC for a period of 14 days. A floating license is needed to use the software after the 14 days.



### Selection and ordering data

#### Parameterization, start-up and diagnostics software for the 3RK3 modular safety system

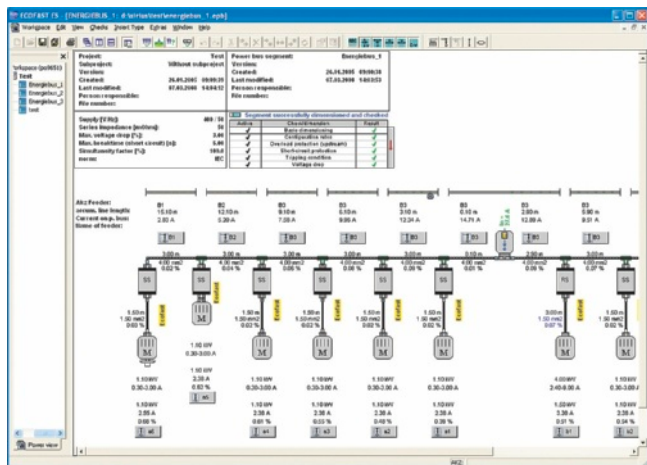
- Runs under WIN XP PROF/  
Windows Vista: Ultimate 32/Business 32
- Without PC cable

Version	DT	Order No.	Price per PU	PU (UNIT, SET, M)	PS*	PG	Weight per PU approx. kg
<b>Modular Safety System ES 2008 Basic</b>							
<b>Floating license for one user</b>							
E-SW, software and documentation on CD, 3 languages (English/French/German), communication through system interface							
• License key on USB stick, Class A, including CD ▶		<b>3ZS1 314-4CC10-0YA5</b>		1	1 unit	131	0.230
<b>Modular Safety System ES 2008 Standard</b>							
<b>Floating license for one user</b>							
E-SW, software and documentation on CD, 3 languages (English/French/German), communication through system interface							
• License key on USB stick, Class A, including CD ▶		<b>3ZS1 314-5CC10-0YA5</b>		1	1 unit	131	0.230
<b>Powerpack For Modular Safety System ES 2008 Basic</b>							
Floating license for one user, E-SW, software and documentation on CD, license key on USB stick, Class A, 3 languages (German/English/French), communication through the system interface							
▶		<b>3ZS1 314-5CC10-0YD5</b>		1	1 unit	131	0.230
<b>Software Update Service</b>							
▶		<b>3ZS1 314-5CC10-0YL5</b>		1	1 unit	131	0.230
For one year with automatic extension, assuming the current software version is in use, E-SW, software and documentation on CD, communication through the system interface							
<b>Accessories</b>							
<b>PC cable for PC/PG communication,</b>							
Through the system interface on the device, for connecting to the serial interface on the PC/PG		A	<b>3UF7 940-0AA00-0</b>	1	1 unit	131	0.150
<b>USB/serial adapters</b>							
To connect a serial PC cable (for connection to the serial PC interface/RS 232), we recommend using 3RK3 modular safety system, 3RW44 soft starter, ET 200S/ECOFAS/ET 200pro motor starter, AS-i safety monitor, AS-i analyzer in conjunction with SIMOCODE pro 3UF7		B	<b>3UF7 946-0AA00-0</b>	1	1 unit	131	0.150

# Planning, Configuration and Visualizing for SIRIUS

## ECOFAST ES

### Overview



ECOFAST ES for configuring, calculating and documenting of applications

#### ECOFAST ES configuring tool

The ECOFAST system is an open and innovative system solution for distributed applications and sets new standards in equipping machines and plants for automation, low-voltage controlgear and drive technology. The system therefore offers a high degree of safety and availability during operation in addition to high time and cost savings during planning and commissioning/mounting.

The convenient ECOFAST ES configuring software reduces configuring times even further and enables reliable configuring right from the start. ECOFAST ES reduces errors and effort during configuring, calculating and documentation of applications.

ECOFAST ES provides the following advantages:

- Graphic user interface for selecting and interconnecting stations on the power bus
- The components are identified down to the unique order number and entered in parts/quantity lists
- Automatic interface and function testing by means of logic rules (e. g. motor brakes, selectivity, etc.)
- Cable characteristics and laying specifications are taken into account in the calculation
- Plug-in connections are adapted automatically
- Division of projects into levels of hierarchy is possible
- The software finally calculates and checks the configuration according to currently valid standards and state of the art
- If necessary, an error list with hints for possible solutions (on-line help) can be generated
- The configuration can be optimized automatically
- Choice of German, English and French as operating language

#### System requirements

ECOFAST ES V 1.4 supports all standard PCs with the Windows operating system. Minimum hardware and software requirements need to be met to work with ECOFAST ES V 1.4; efficient operation is possible with the recommended values.

System requirements	Min.	Recommended
<b>Operating system</b> (with service pack)	Windows 2000 or Windows XP Professional	
<b>Processor</b>	Pentium 800 MHz	Pentium 1000 MHz <sup>1)</sup>
<b>Graphics cards</b>		
• Resolution	1024 x 768	1280 x 1024
• Colors, number	256	True Color
<b>Main memory</b>	512 MB RAM	> 512 MB RAM
<b>Free space</b> on hard disk	At least 50 MB <sup>2)</sup>	
<b>CD-ROM drive<sup>3)</sup></b>	Yes, for the installation of ECOFAST ES V 1.4	

<sup>1)</sup> More powerful platforms may be necessary when working with options.

<sup>2)</sup> Additional free space recommended, e. g. for swap-out file.

<sup>3)</sup> CD-ROM drive not required for using ECOFAST ES V 1.4.

### Selection and ordering data

Version	DT	Order No.	Price per PU	PU (UNIT, SET, M)	PS*	PG	Weight per PU approx.
---------	----	-----------	--------------	-------------------	-----	----	-----------------------

#### ECOFAST ES

- ECOFAST ES, basic package V 1.4**
- Graphic configuring tool for SIRIUS drive solutions
- Operator prompting for selecting products
  - Configuring the supply system according to standards
  - Documentation, parts lists, quantity lists
  - Operating languages: German, English, French
  - Type of delivery: CD, single license

B **3ZS1 200-0CC14-0YA0** 1 1 unit 121 0.100