

PRODUCT INFORMATION

S334 M20

Master Controller for Locomotives



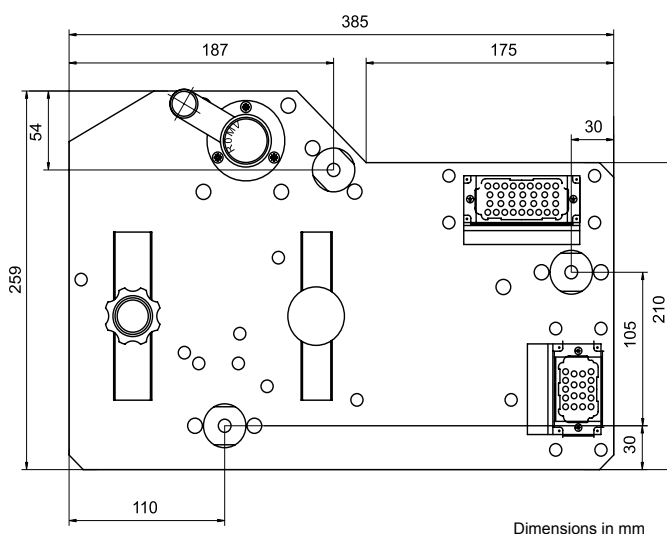
Application:

The typical field of application is the driver's desk of locomotives - design variants can, however, be used in all rail vehicles.

Special Equipment Features:

- Using high-quality materials for optimum of layout and design, reduction of weight and saving costs.
- Setpoint devices „touch free“ - without wear and tear mechanically
- Setpoint devices may be designed with digital or analogue output signal or as PWM
- Ongoing tests and inspections in compliance with relevant international standards and regulations
- Switching sequence to customer specifications
- Equipment complement with snap-action switches Type S826a
- Quickly replaceable unit: master controller completely wired with built-in connectors
- Long mechanical life
- Compatible for panel mounting with previous models

Dimension diagram, Circuit diagram



Technical Data

Operating handle speed setpoint control	<ul style="list-style-type: none"> ● 28 notching positions with one-sided unlocking by turning the operating handle 45° ● electron. setpoint controller, $U_{out}=0..10\text{ V}$
Master cont./brake cont.	<ul style="list-style-type: none"> ● Upshift interlock and dead man function in the master operating handle ● 3x snap-action switch S826a, $I_{th}=10\text{ A}$ and electron. setpoint controller, $U_{out}=0..10\text{ V}$
Reverser handle	<ul style="list-style-type: none"> ● Forward/M/Neutral/Reverse ● Mechanical interlocking with master controller/brake controller handle ● Detachable direction controller can be used as key ● 4 switching elements, $I_{th}=10\text{ A}$
Mechanical life	> 3 Mio operations
Operating handle shapes	Knob
Slot cover	Crank
Range of temperature	-25°C to +70°C
Dimensions (L x B x H)	385 x 259 x 85 mm
Weight	5 kg